

# Table des matières

<b>Créer un JOB de Sauvegarde</b> .....	2
<i>Type de Machine</i> .....	2
<i>Ajout de VM depuis un Cluster</i> .....	3
<i>Selection du Stockage</i> .....	5
<i>Full Synthétique</i> .....	6
<i>Planifier votre JOB</i> .....	8
<i>Valider votre JOB</i> .....	9



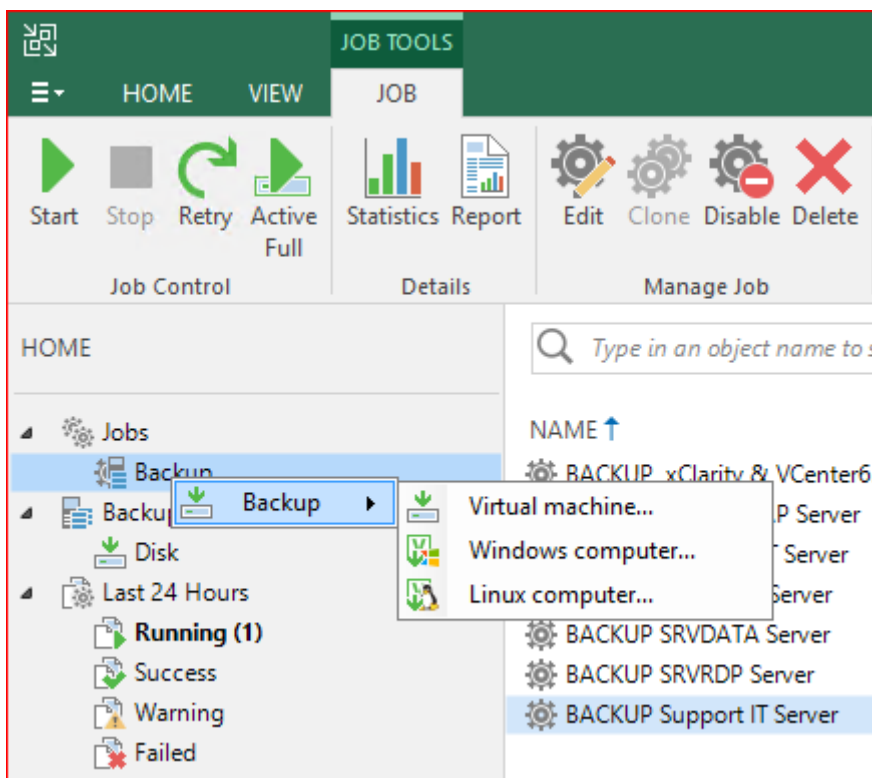
# Créer un JOB de Sauvegarde

## Type de Machine

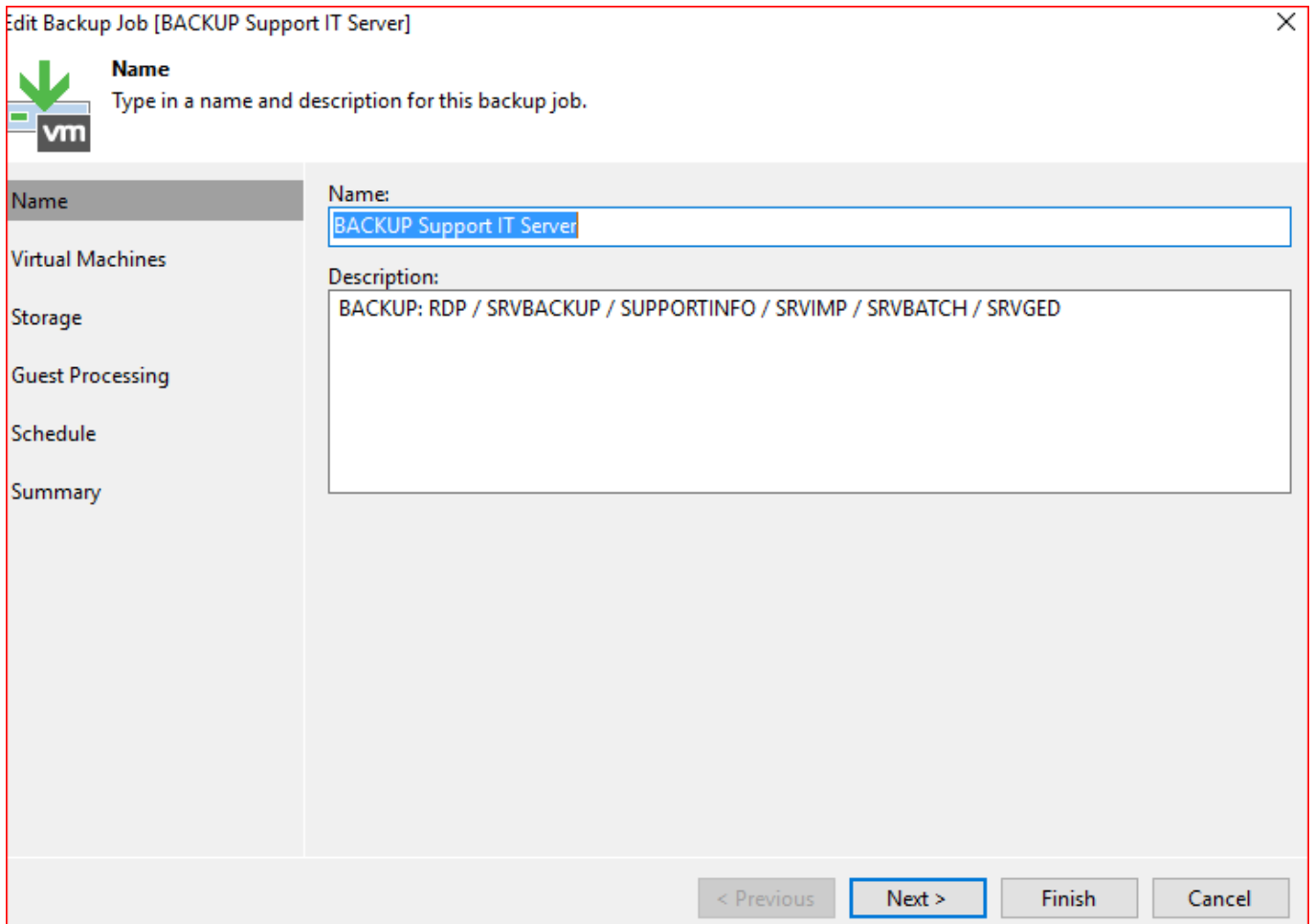
Il vous est possible 3 types de Sauvegarde:

- 1. Machine Virtuel
- 2. Machine Windows Physique
- 3. Machine Linux Physique

Ici nous nous attarderons sur les VM  
Sélectionner **Virtual Machine**.



Nommer votre JOB et donner lui une description au besoin.  
Ici nous mettrons le nom des Serveurs qui seront sauvegardés.



Edit Backup Job [BACKUP Support IT Server]

**Name**  
Type in a name and description for this backup job.

**Name:**  
BACKUP Support IT Server

**Description:**  
BACKUP: RDP / SRVBACKUP / SUPPORTINFO / SRVIMP / SRVBATCH / SRVGED


< Previous   Next >   Finish   Cancel

Valider le bouton **Next** pour passer à l'étape suivante.

## Ajout de VM depuis un Cluster

Cliquer sur le bouton **Add** afin de pouvoir ajouter vos VM dans le JOB de sauvegarde.

Edit Backup Job [BACKUP Support IT Server]

 **Virtual Machines**  
Select virtual machines to process via container, or granularly. Container provides dynamic selection that automatically changes as you add new VM into container.

Name

Virtual Machines







Storage

Guest Processing

Schedule

Summary

Virtual machines to backup:

Name	Type	Size
 SRVBATCH #	Virtual Machine	80,0 GB
 SRVIMP	Virtual Machine	45,0 GB
 SRVGED	Virtual Machine	795 GB
 SUPPORTINFO	Virtual Machine	60,0 GB
 RDP	Virtual Machine	100 GB
 SRVBACKUP	Virtual Machine	100 GB

Add...  
Remove  
Exclusions...  
Up  
Down  
Recalculate  
Total size: 1,15 TB

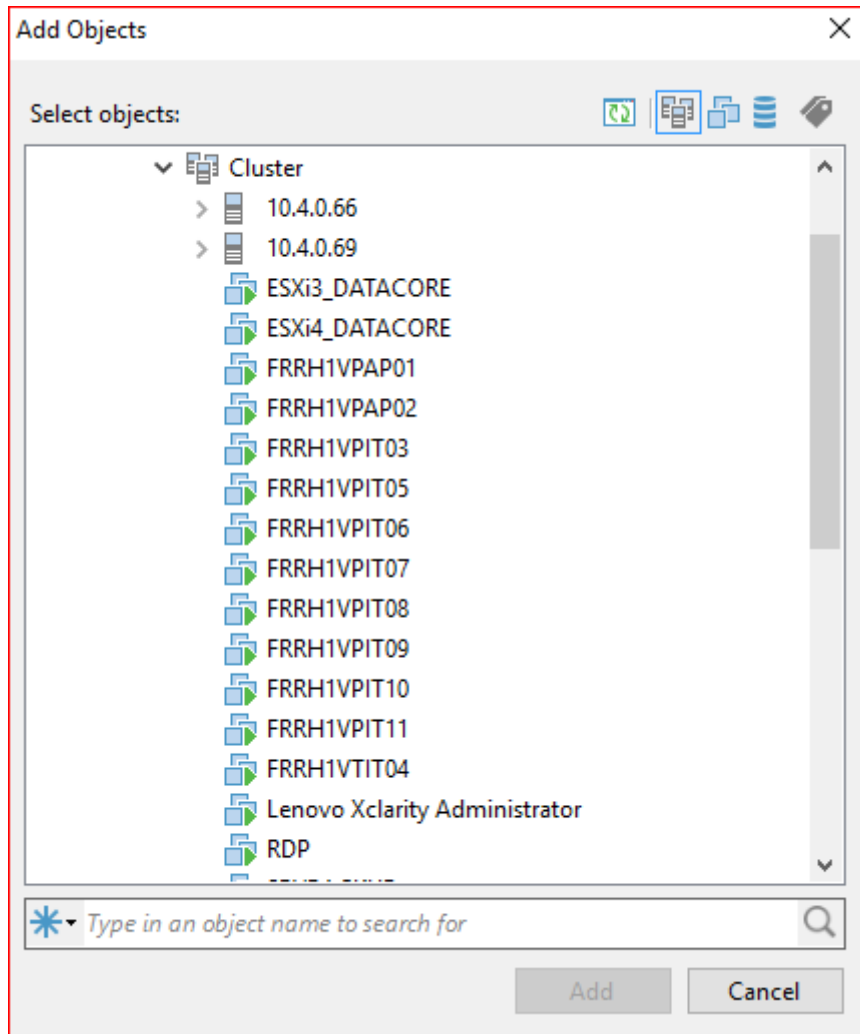
< Previous **Next >** Finish Cancel

Naviguer dans l'arborescence / **Sélectionner** votre **cluster** puis vos **machines cibles**.



**Noter que la sélection multiple est possible, afin de sélectionner plusieurs VM en même temps.**

La manipulation reste la même pour un hôte Standalone.



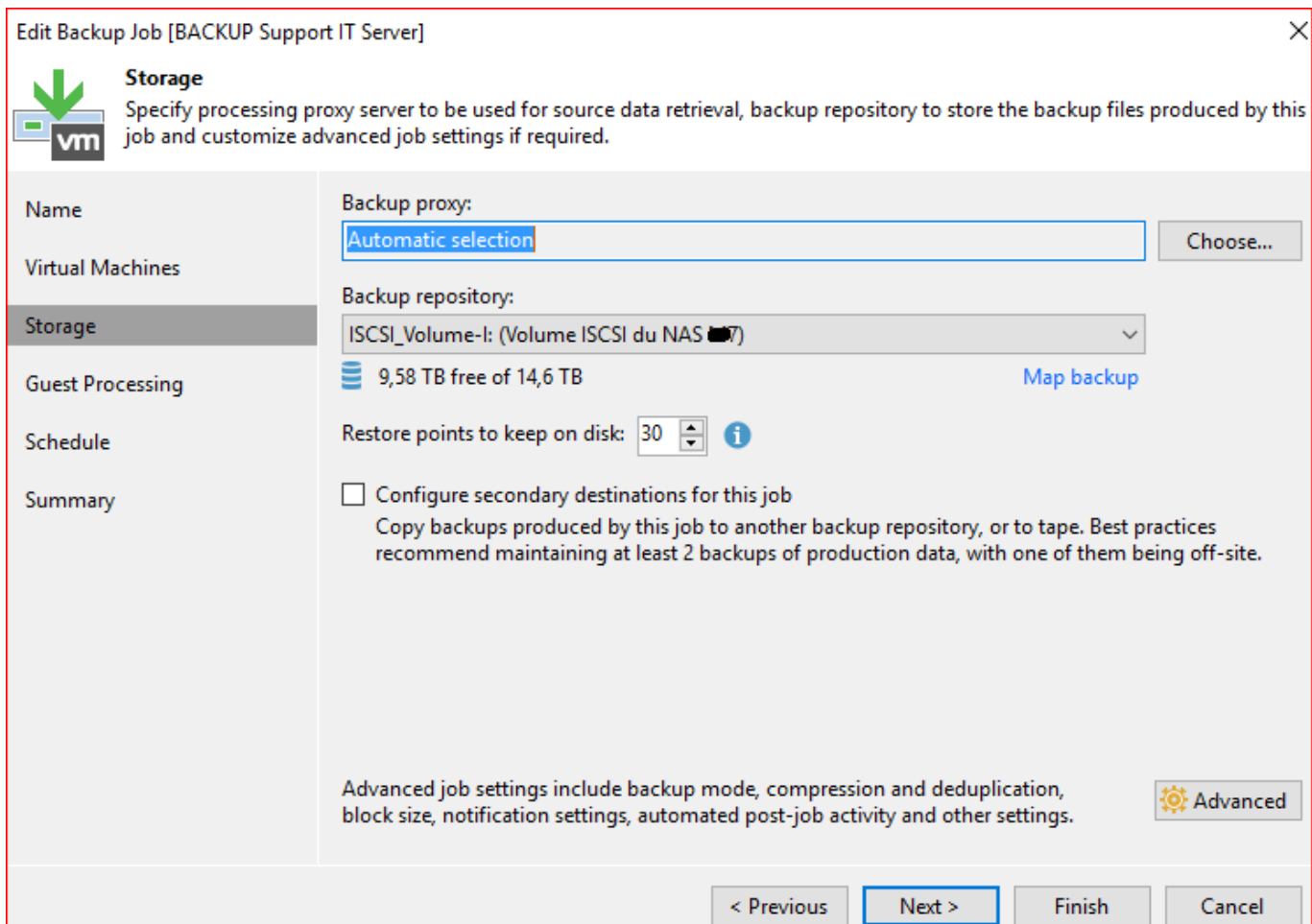
Cliquer sur le bouton **Add** afin de pouvoir ajouter vos VM dans le JOB de sauvegarde.

## Selection du Stockage

Sélectionner votre Stockage ISCSI depuis le menu déroulant.

Vous pouvez aussi indiquer le nombre de **point de restauration** possible pour ce JOB.

*Ici nous garderons **30 jours glissant**.*



Si vous cliquer sur **Advanced** vous aurez le choix de spécifier le type de sauvegarde. Type **Incrémentiel** avec option de choisir le jour de la **Full Synthétique**.

## Full Synthétique

**Full Synthétique** est une option de Veeam qui permet de **fusionner des jobs Incrémentales** pour en faire une Full.

Du coup la **Full Synthétique** est très **petite** et se bases sur les incrémentales précédentes en cas de restauration.

Advanced Settings

Backup Maintenance Storage Notifications vSphere Integration Scripts

Backup mode

**Reverse incremental (slower)**  
Increments are injected into the full backup file, so that the latest backup file is always a full backup of the most recent VM state.

**Incremental (recommended)**  
Increments are saved into new files dependent on previous files in the chain. Best for backup targets with poor random I/O performance.

Create synthetic full backups periodically Days...  
Create on: samedi

Transform previous backup chains into rollbacks  
Converts previous incremental backup chain into rollbacks for the newly created full backup file.

Active full backup

Create active full backups periodically

Monthly on: First ▼ lundi ▼ Months...

Weekly on selected days: Days...  
samedi

Save As Default OK Cancel

***Ici nous choisirons le Samedi comme jour de Full Synthétique.***

Edit Backup Job [BACKUP Support IT Server]

**Guest Processing**  
Choose guest OS processing options available for running VMs.

Name

Virtual Machines

Storage

**Guest Processing**

Schedule

Summary

**Enable application-aware processing**  
Detects and prepares applications for consistent backup, performs transaction logs processing, and configures the OS to perform required application restore steps upon first boot.  
Customize application handling options for individual items and applications Applications...

**Enable guest file system indexing**  
Creates catalog of guest files to enable browsing, searching and 1-click restores of individual files. Indexing is optional, and is not required to perform instant file level recoveries.  
Customize advanced guest file system indexing options for individual items Indexing...

Guest OS credentials

Add...

Manage accounts

Customize guest OS credentials for individual items and operating systems Credentials...

Test Now

< Previous Next > Finish Cancel

Cliquer sur le bouton **Next** afin de pouvoir passer à l'étape suivante.


## Planifier votre JOB

Vous aurez le choix:

- **Jour.**
- **Mois.**
- **Heure en Heure.**
- **Démarrer après un autre JOB.**

**Vous pourrez aussi déterminer le nombre de tentative en cas d'echec.**

Edit Backup Job [BACKUP Support IT Server] X

 **Schedule**  
Specify the job scheduling options. If you do not set the schedule, the job will need to be controlled manually.

Name	<input checked="" type="checkbox"/> Run the job automatically
Virtual Machines	<input checked="" type="radio"/> Daily at this time: 20:00 <input type="radio"/> Monthly at this time: 22:00 <input type="radio"/> Periodically every: 1 <input type="radio"/> After this job: BACKUP xClarity & VCenter6.7 Machine (Contient les machines Xcla
Storage	Everyday <input type="radio"/> Fourth samedi <input type="radio"/> Hours <input type="radio"/> Months... <input type="radio"/> Schedule...
Guest Processing	Days... Months... Schedule...
<b>Schedule</b>	Automatic retry
Summary	<input checked="" type="checkbox"/> Retry failed items processing: 2 times Wait before each retry attempt for: 3 minutes
	Backup window
	<input type="checkbox"/> Terminate job if it exceeds allowed backup window <span style="float: right;">Window...</span> If the job does not complete within allocated backup window, it will be terminated to prevent snapshot commit during production hours.

< Previous Apply Finish Cancel


***Ici nous le lancerons à 20h00.***


Cliquer sur le bouton **Apply** afin de pouvoir passer à l'étape suivante.

## Valider votre JOB

Ici un récapitulatif de la programmation de votre JOB de sauvegarde.

Edit Backup Job [BACKUP Support IT Server] ✕

 **Summary**  
The job's settings have been saved successfully. Click Finish to exit the wizard.



Name	Summary:
Virtual Machines	Name: BACKUP Support IT Server
Storage	Target Path: I:\VeeamBackups
Guest Processing	Type: VMware Backup
Schedule	Source items:
<b>Summary</b>	SRVBATCH # (██████████)
	SRVIMP (██████████)
	SRVGED (██████████)
	SUPPORTINFO (██████████)
	RDP (██████████)
	SRVBACKUP (██████████)
	Command line to start the job on backup server: "C:\Program Files\Veeam\Backup and Replication\Backup\Veeam.Backup.Manager.exe" backup 64336319-43d0-4391-bea2-43b41c3a5111

Run the job when I click Finish

< Previous Next > Finish Cancel

Cliquer sur le bouton **Finish** afin de pouvoir **Valider** votre JOB de sauvegarde.

— *sylvain* 2020/07/05 18:32

From:  
<https://wiki.mazinger.fr/wiki/> - **My Personal Wiki**

Permanent link:  
<https://wiki.mazinger.fr/wiki/doku.php?id=backup:veeam:creer-un-job>

Last update: **2024/03/03 12:56**

